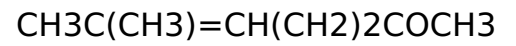


# METHYLHEPTENONE 6--5--2-



CAS: 110-93-0

EG: 203-816-7

H226 Flammable liquid and vapour. | H319 Causes serious eye irritation. | P210 Keep away from heat, hot surfaces, sparks, open flames and other ignition sources. No smoking. | P280 Wear protective gloves/protective clothing/eye protection/face protection. | P305 IF IN EYES:



Warning